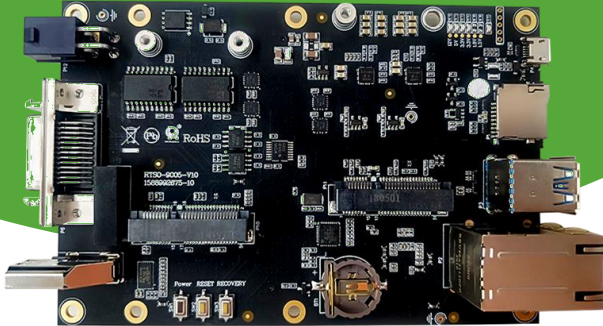




RTSO-9005 Carrier Board
 PN: RTSO-9005
 Adaptive NVIDIA JETSON TX2/TX2i
 Version: V1.0



RTSO-9005 is a low-cost NVIDIA® Jetson™ TX2/TX2i carrier board, the size of the carrier board is the same as the NVIDIA Jetson® TX2/TX2i module, it provides USB3.0, Gigabit Ethernet, HDMI, TF card, SIM card, Mini-PCIE, mSATA, isolated UART, isolated GPIO, CAN, fan, RTC battery and other interfaces.

Product standard

Display	1 x HDMI interface (Max 6Gbps, 24bpp, 4096x2160@60Hz)
USB	2 x USB3.0 interface (Each port has a 5Gbps bandwidth and provides 1A output current)
CAN	2 x CAN
Network	2 x GbE (10/100/1000 BASE-T)
Serial port	4 x quarantine UART
GPIO	4 x quarantine GPIO
SD	1 x SD cards slot
SIM	1 x SIM cards slot
PCIE	1 x Mini-PCIE interface , 1 x Mini-PCIE/mSATA interface
RTC	1 x RTC interface
FAN	1 x Fan control interface
Power requirement	+7V~+19V
Size	130mm×87mm×22mm
Operating temperature	-40~+85°C
Weight	105g

Note: TX2 modules are rated to -25~+80°C



Physical connection with TX2 module

RoHS



Jetson Elite Partner